



# DREG Polyclonal Antibody

<b>Catalog No</b>	YP-Ab-13199
<b>Isotype</b>	IgG
<b>Reactivity</b>	Human;Mouse
<b>Applications</b>	WB;IF;ELISA
<b>Gene Name</b>	GPR126
<b>Protein Name</b>	G-protein coupled receptor 126
<b>Immunogen</b>	The antiserum was produced against synthesized peptide derived from human GPR126. AA range:1091-1140
<b>Specificity</b>	DREG Polyclonal Antibody detects endogenous levels of DREG protein.
<b>Formulation</b>	Liquid in PBS containing 50% glycerol, 0.5% BSA and 0.02% sodium azide.
<b>Source</b>	Polyclonal, Rabbit,IgG
<b>Purification</b>	The antibody was affinity-purified from rabbit antiserum by affinity-chromatography using epitope-specific immunogen.
<b>Dilution</b>	Western Blot: 1/500 - 1/2000. Immunofluorescence: 1/200 - 1/1000. ELISA: 1/20000. Not yet tested in other applications.
<b>Concentration</b>	1 mg/ml
<b>Purity</b>	≥90%
<b>Storage Stability</b>	-20°C/1 year
<b>Synonyms</b>	GPR126; DREG; VIGR; G-protein coupled receptor 126; Developmentally regulated G-protein-coupled receptor; Vascular inducible G protein-coupled receptor
<b>Observed Band</b>	140kD
<b>Cell Pathway</b>	Cell membrane ; Multi-pass membrane protein . Detected on the cell surface of activated but not resting umbilical vein. .
<b>Tissue Specificity</b>	Expressed in placenta and to a lower extent in pancreas and liver. Detected in aortic endothelial cells but not in skin microvascular endothelial cells.
<b>Function</b>	function:Orphan receptor.,polymorphism:Genetic variations in GPR126 influences stature as a quantitative trait (STQTL) [MIM:606255]. Adult height is an easily observable and highly heritable complex continuous trait. Because of this, it is a model trait for studying genetic influence on quantitative traits.,similarity:Belongs to the G-protein coupled receptor 2 family. LN-TM7 subfamily.,similarity:Contains 1 CUB domain.,similarity:Contains 1 GPS domain.,similarity:Contains 1 pentaxin domain.,
<b>Background</b>	This gene, which is upregulated in human umbilical vein endothelial cells, encodes a G protein-coupled receptor. Variations in this gene can affect a person's stature. Multiple transcript variants encoding different proteins have been found for this gene. [provided by RefSeq, Mar 2009],

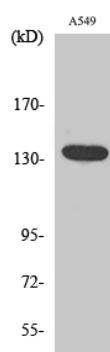
**matters needing attention**

Avoid repeated freezing and thawing!

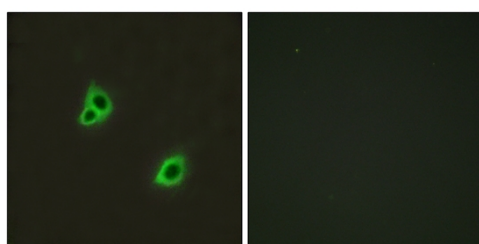
**Usage suggestions**

This product can be used in immunological reaction related experiments. For more information, please consult technical personnel.

## Products Images



Western Blot analysis of various cells using DREG Polyclonal Antibody



Immunofluorescence analysis of HUVEC cells, using GPR126 Antibody. The picture on the right is blocked with the synthesized peptide.